

Teacher Resource Sheet: Bony fish anatomy - Whiting species

Phase of learning

Senior Secondary (Years 11-12)

WA Curriculum

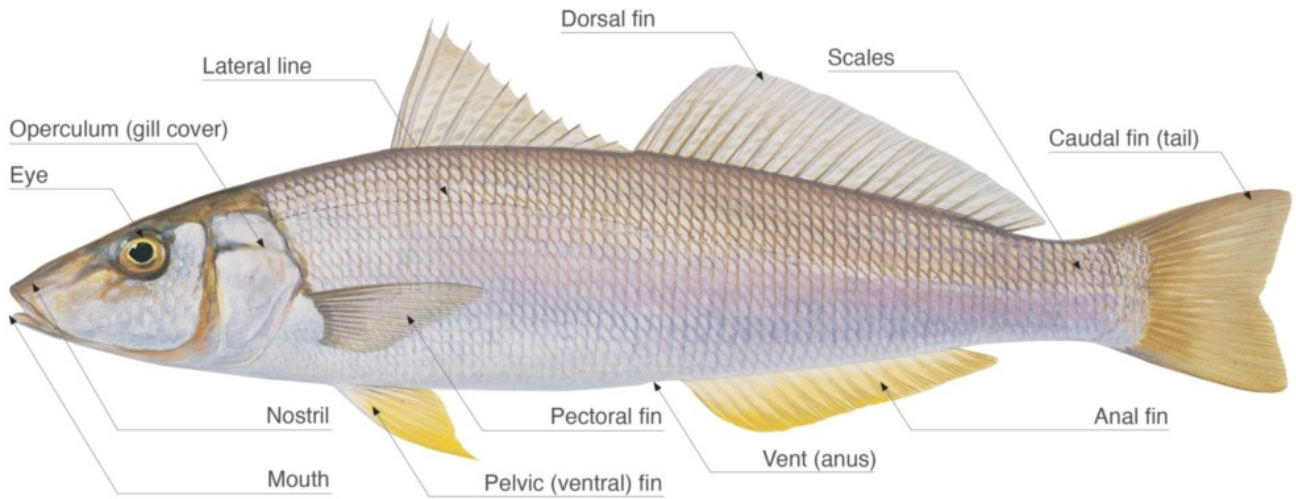
SS Biology – ATAR, SS Biology – General, SS Integrated Science – General

Region

North Coast, Gascoyne Coast, West Coast, South Coast, Indian Ocean Territories

Summary

This teacher resource sheet is associated with the Lessons: Fish Dissection and Fish Dissection - Senior Secondary.



Download Files

[TRS - Yellowfin in and ex anatomy](#)

Related resources

[Lesson: Fish Dissection - Senior Secondary](#)

[Poster: Bony Fish - External Anatomy \(including information\)](#)

[Poster: Bony Fish - Internal Anatomy \(including information\)](#)

[Fact Sheet: Fish Anatomy](#)

[Student Worksheet: Bony fish anatomy - Whiting species SS](#)

[Lesson: Fish Dissection](#)

[Student worksheet: Bony fish anatomy - Whiting species](#)