

# Teacher Resource Sheet: Bony fish anatomy - Painted sweetlips

## Phase of learning

Years 7 - 8, Years 9 - 10, Senior Secondary (Years 11-12)

## WA Curriculum

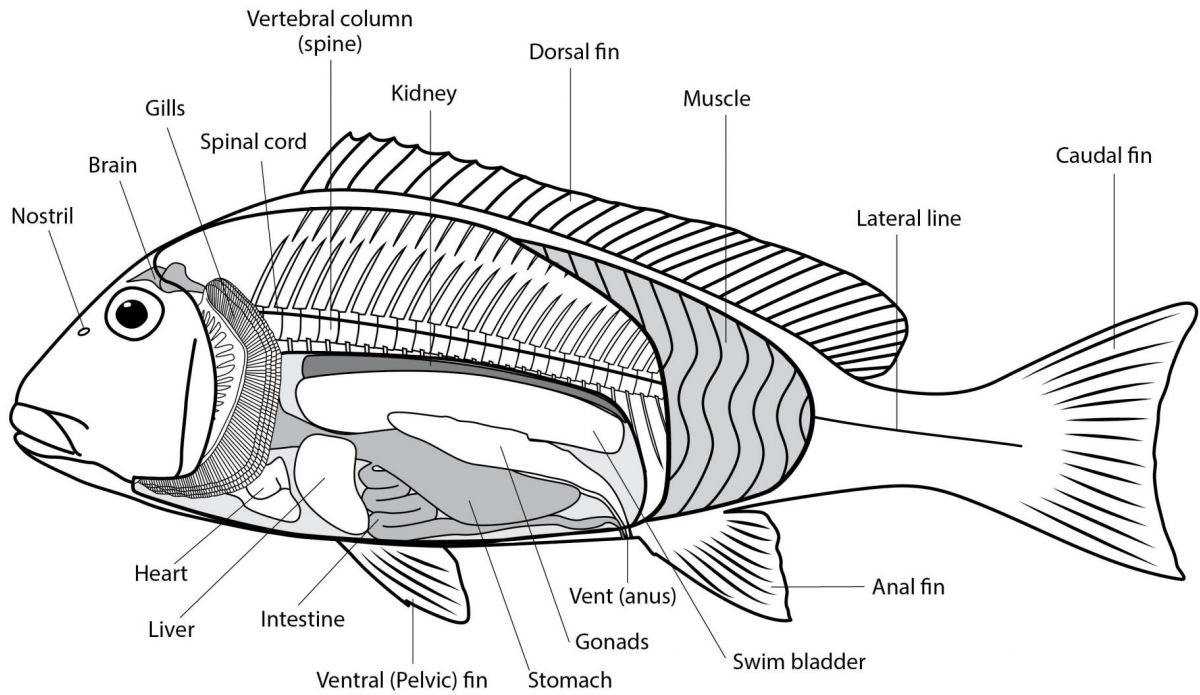
K-10 Science, SS Biology – ATAR, SS Biology – General, SS Integrated Science – General

## Region

North Coast, Gascoyne Coast, West Coast, South Coast, Indian Ocean Territories

## Summary

This teacher resource sheet is associated with the Lessons: Fish Dissection and Fish Dissection - Senior Secondary.



## **Download Files**

[TRS - BONY FISH ANATOMY - PAINTED SWEETLIPS](#)

## **Related resources**

[Lesson: Fish Dissection - Senior Secondary](#)

[Poster: Bony Fish - External Anatomy \(including information\)](#)

[Poster: Bony Fish - Internal Anatomy \(including information\)](#)

[Fact Sheet: Fish Anatomy](#)

[Student Worksheet: Bony fish anatomy - Painted sweetlips SS](#)

[Student Worksheet: Fish anatomy SS](#)